



Sikalastic®-560

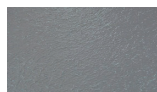
Feel how elastic and durable
Sikalastic®-560 is.

Use Sikalastic® Reemat for detailing work, and
substrates with high movements or cracks.

Available in 2 colours (other colours on request)

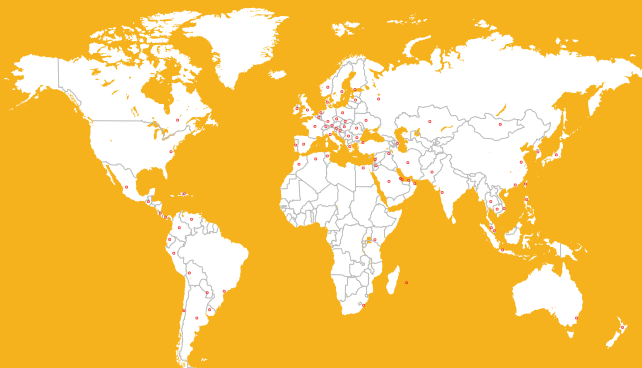


White



Grey

SIKA WORLDWIDE



- 5 continents
- Subsidiaries in over 100 countries
- Manufacture in over 300 factories
- More than 25 000 employees

KwaZulu-Natal
Tel: +27 31 792 6500

Gauteng
Tel: +27 11 573 4940

Bloemfontein
Tel: +27 51 430 0333

Western Cape
Tel: +27 21 555 0755

Eastern Cape
Tel: +27 41 453 2813

Zululand
Tel: +27 35 797 3814

Namibia
Tel: +264 6125 9092

Botswana
Tel: +267 7289 4779

PRODUCT
INFORMATION



Consult most current local Product Data Sheet prior to any use.
www.sika.co.za

BUILDING TRUST



Sikalastic®-560

TRIED AND TRUSTED TIME AND TIME AGAIN

For every roofing project



QUALITY WATERPROOFING
SOLUTION BASED ON SIKA
CO-ELASTIC TECHNOLOGY (CET)

BUILDING TRUST





WHAT IS CET CO-ELASTIC TECHNOLOGY?



The Co-Elastic Technology combines the high performance of a polyurethane dispersion with the well-known properties of an acrylic.

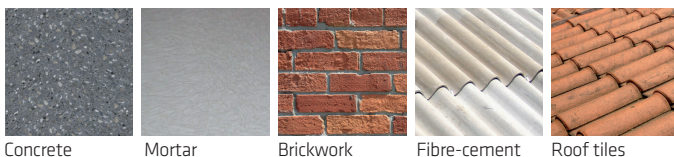
Improved overall performance compared to conventional acrylic dispersions.

- Higher elastic and crack-bridging properties
- High colour stability/non-yellowing
- Higher durability
- Faster drying time
- Environmentally friendly
- Longer shelf life: 12 months

Packaging: 5 L & 20 L



Can be used on many materials

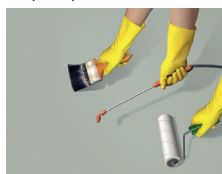


Concrete Mortar Brickwork Fibre-cement Roof tiles



Roofing felt Bituminous sheets Metal Wood Ceramic tiles

Very easy to use



Roller, brush, spray

Seamless solution



Fully bonded, no leaking joints

Environmentally friendly



VOC free water-based

CAN BE USED FOR

- Exposed waterproofing on roofs (non-walkable)
- External waterproofing under tiles (e.g. on balconies)
- Horizontal and vertical surfaces



- Waterproofing of new roofs



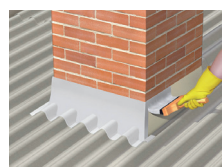
- For refurbishment & for life cycle extension of old roofs, e.g. over bitumen membranes & coatings



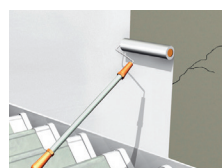
- As reflective coating to enhance energy efficiency by reducing cooling costs (in white colour)



- Roofs with many details and complex geometries



- For roof detailing including flashings, sealing joints, laps and roofing screws



- Repairing work on roofs and walls



- As waterproofing layer under tiles on balconies and terraces

HOW TO USE SIKALASTIC®-560



SUBSTRATE PREPARATION & PRIMING

- All dust, loose friable material must be completely removed from all surfaces before application of the product, preferably by brush and/or vacuum.
- Remove weak concrete surface defects such as blowholes. Voids must be fully exposed. High spots must be removed by e.g. grinding.



- Prime the substrate with one layer Sikalastic®-560 thinned with 10% water. Drying Time: (20° C, 50% air humidity) ~2 hrs. In the case of porous concrete surfaces or where aircon pressures could be a factor, please call our technical services for the best preparation advice.



APPLICATION

- Stir Sikalastic®-560 thoroughly for 3 minutes in order to achieve a homogeneous mix (tool: electric stirrer 300-400 rpm). Overmixing must be avoided to minimise air entrainment.



- If detail work to waterproofing is required, this should be done first according to the standard application procedure of Sikalastic-560®. In every case use Sikalastic Reemat for all detail work or substrates with cracks.



- Apply Sikalastic®-560 with a brush, roller or spray according to the system standards. Drying Time: (30° C, 50% air humidity) Touch dry: 1 hour Rain resistant: 4 hours 1st to 2nd layer: 6 hours Totally cured: 4 days