



FLOORING

Sikafloor® HardTop

SCREED RANGE FULFILLING
THE HIGHEST DEMANDS

Sikafloor® HardTop

SCREED RANGE FULFILLING THE HIGHEST DEMANDS

SIKA OFFERS THE ULTIMATE screed portfolio for new construction and renovation projects in the field of industrial and commercial flooring. Especially for refurbishment projects, where quick return to service and highest quality screed is required, Sikafloor® HardTop systems exceed the expectations of owners and contractors.

SCREED WITH VERY HIGH MECHANICAL STRENGTH

Compressive strength of $> 60 \text{ N/mm}^2$ (EN 13813 / EN1504) and very good wear resistance Böhme A6.

EXTREMELY LOW SHRINKAGE

SikaScreed® Hardtop – $65 \sim 0.1\text{‰}$ (mm/m) EN 13454-2

VERY FAST SETTING

The Sikafloor® HardTop systems are fast setting and can be walked on a few hours after placing. In 24 hours, compressive strength may be expected of $\sim 35 \text{ N/mm}^2$ or higher $\sim 20^\circ\text{C}$.

VERSATILE

Applicable in 8 – 200 mm thickness, for both interior and exterior

TIME-SAVING

Directly coatable with resinous coatings after 2 – 48 hours without preparation

EASY INSTALLATION

Approved with machine mixing/pumping, long trowelling window



FAST FLOOR REPAIR

After years of use, the concrete often needs to be repaired or even removed and rehabilitated. With Sikafloor® HardTop CM Rapid systems and mortars from the SikaScreed® HardTop range, concrete refurbishment can be carried out very rapidly and economically. Sikafloor® HardTop CM Rapid can be coated on the day of installation or within a timeframe of 48 hours with the standard Sikafloor® epoxy primer for the subsequent Sikafloor® resinous systems. This epoxy coating also acts as a curing agent for the mortar still in the curing process.

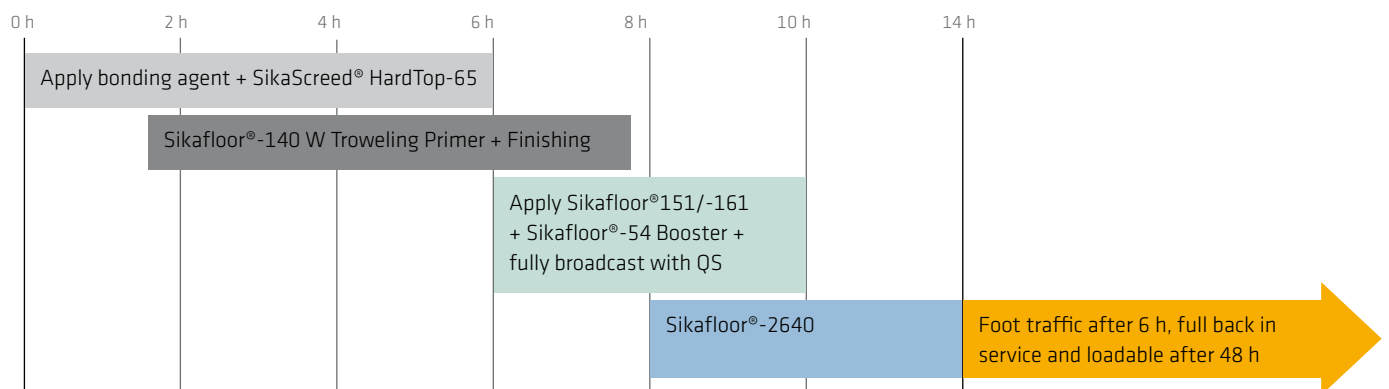
Regular cement based screeds need several days to achieve the required strength, must dry out and can shrink up to 0.5‰ (mm/m) or even higher. Additionally, they need to be prepared by grinding or shot-blasting before a resinous coating can be applied. As an extra feature, the new SikaScreed® HardTop-65 can be installed in an almost self-levelling manner. With much less heavy work load for the workers it can easily be placed and levelled with the dappling technique using the dapple bar. Required thickness and a very even surface is achieved. The applicators can carry out the application while standing and are much faster than with the traditional application of soft plastic and dry earth screeds.



TYPICAL PROGRAM OF FULL SYSTEM BUILD UPS IN SHORTEST TIME

- Industrial building refurbishment
- 500 m²
- Average layer thickness 3.5 cm
- Temperature 20°C

FLOOR REPAIRMENT INCLUDING HEAVY DUTY EPOXY FLOOR COATING



FLOOR REPAIRMENT WITH MEDIUM DUTY COLORED CONCRETE FLOOR






SikaScreed® HardTop MORTARS

CHARACTERISTICS

These mortars are designed for rapid installation and high-strength development. SikaScreed® HardTop mortars in combination with the SikaScreed®-20 EBB (epoxy bonding bridge) have minimal shrinkage resulting in a superior bond to the substrate, as well as designed for fully chemical water binding.



	SikaScreed® HardTop-60	SikaScreed® HardTop-65	SikaScreed® HardTop-70
			
Use	To level large interior areas and exterior with a dense coating in standard screed thicknesses.	To level large interior areas and exterior with a dense coating in standard screed thicknesses.	To level and spot repair small interior and exterior areas in higher thicknesses.
Consistency	Pumpable soft consistency for application with straight edge. Especially well workable also for slopes up to 6%.	The consistency can be adjusted with the water content from soft plastic to nearly self levelling.	Earth dry to soft consistency to work with hand trowels.
Layer thickness	8 - 80 mm	8 - 80 mm	10 - 200 mm
Start troweling	1.5 - 3 h	1.5 - 3 h	45 - 60 min.
Troweling time*	Long	Longest	Normal
Compressive strength 24 h	~ 35 N/mm ²	~ 40 N/mm ²	~ 45 N/mm ²
Mechanical 28 d	C60 - F7	C65 - F7	C70 - F7
Abrasion resistance*	A6	A6	A6 & AR 0.5
EN 1504	No	Yes	Yes
Freeze thaw resistance	No	No	Yes

*The use of the Sikafloor®-140 Troweling Primer improves the abrasion resistance and prolongs the troweling window.

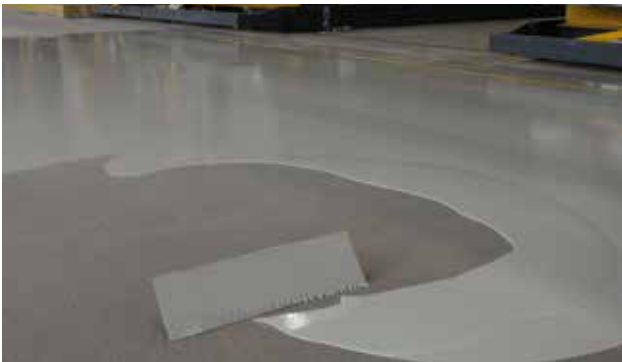
Sikafloor®-140 W Troweling Primer

Sikafloor®-140 W Troweling Primer

Sikafloor®-140 W Troweling Primer is a waterbased, patented bonding agent for SikaScreed® HardTop systems. It is sprayed onto the surface of SikaScreed® HardTop immediately before starting to powerfloat the surface. Due to the chemical bond between substrate and coating, the peel adhesion is significantly improved.

Besides this, it has many more advantages:

- Enlarges the time window for subsequent coating
- Improves the bonding between SikaScreed® HardTop and epoxy coatings
- Improves mechanical surface strength of SikaScreed® HardTop
- Acts as a troweling agent for easier troweling properties
- Gives very high flexibility in terms of primer application (up to 3-day stages of cementitious screed can be primed in one single process)



With such benefits, the obvious unique selling point is an ultra-fast system build up without preparing the substrate through shotblasting. The combination of SikaScreed® HardTop, Sikafloor®-140 W Troweling Primer and Sikafloor®-151/-161 in a timeframe of 48 hours provides at least the same bond strength as a conventional build up but without having an extra step of preparing the fresh installed mortar before coating.

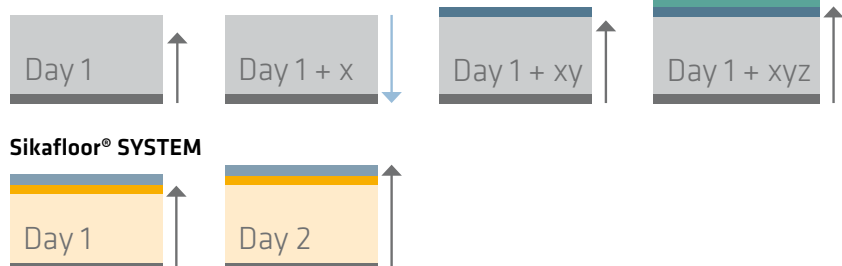
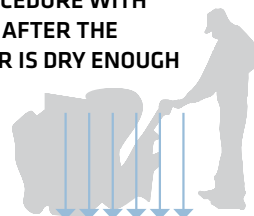


Sikafloor® SYSTEM WITHOUT DAMAGING THE NEW MORTAR. FULL BUILD-UP FROM MORTAR TO MultiDur® EPOXY FLOOR POSSIBLE IN ONE DAY

Advantages:

- No dust
- No noise
- No additional waste
- No additional time
- No additional installation
- No additional energy
- No additional planning
- System guarantee
- Durable / long service life

STANDARD PROCEDURE WITH SHOTBLASTING AFTER THE SCREED MORTAR IS DRY ENOUGH



VOLUME APPLICATION

Fast floor refurbishment jobs not only depend on fast curing products but also on an efficient process on the jobsite. Preparation, finishing and clean-up work on the jobsite create costs and can't be avoided. Therefore, the volume that is applied during the effective work time is key. The Sika solution: efficient machine technology in partnership with Inotec GmbH and supply of SikaScreed® HardTop in bags (25 kg), Big Bag (~ 1 ton) and One-Way-Container (~ 0.8 ton) technology. The pumping of up to 5.5 tons/hour is standard in such organized construction sites. Depending on the job site conditions the most suitable combination of packaging and machinery equipment can be adjusted e.g. on the height, pumping distance or possible load on the floor.

The automated mixing and pumping of screeds with suitable machines is very sustainable. Heavy lifting for the workers and dust is extremely minimized or completely avoided. In addition, it is not only a matter of completing the work faster, but also of being able to work earlier on the next construction site.



Sikafloor® SYSTEM BUILD-UPS WITH SikaScreed® HardTop

Use	LIGHT INDUSTRIAL / RESIDENTIAL PARKING / WAREHOUSE		
Primer	Sikascreed®-20 EBB		
Screed mortar	Sikascreed® Hardtop-60/-65	Sikascreed® Hardtop-60	Sikascreed® Hardtop-60/-65
Trowel finish			Plastic sheet
Surface protection / coating	Sikagard®-916	Sikafloor®-151/-161	Sikagard®-916
	Directly applied a few hours after troweling	Directly applied after troweling fully broadcasted with quartz sand	Next day application
		Sealed with Sikafloor®-2640 or another top coat	
Light trafficable	48 hours after Sikagard®-916 application ~ 20°C	After Sikafloor®-2640 = ~ 1 day ~ 20°C	48 hours after Sikagard®-916 application ~ 20°C
Full trafficable	7 days after Sikagard®-916 application ~ 20°C	After Sikafloor®-2640 = ~ 2 day ~ 20°C	7 days after Sikagard®-916 application ~ 20°C
Main advantages	Ultra fast system with colored surface protection.	Fast full build up including slip resistant epoxy coating	Fast system with colored surface protection.



HEAVY INDUSTRY / CAR PARKS

Sikascreed® Hardtop-60/-65	Sikascreed® Hardtop-60/-65	Sikascreed® Hardtop-60/-65
Sikafloor®-140 W Troweling Primer	Sikafloor®-140 W Troweling Primer	Plastic sheet
	Sikafloor®-151/-161	Shot blasting after more than 24 h
Plastic sheet	Applied within 48 h after troweling smooth or broadcasted	Standard Sikafloor® coating system
	Subsequent Sikafloor® coating system	Standard Sikafloor® coating system
18 h ~ 20°C	Depends on Sikafloor® system	Depends on Sikafloor® system
24 - 48 h ~ 20°C	Depends on subsequent coat system	Depends on Sikafloor® system
Ultra fast system with concrete look and highest wear resistance Boehme A4	Fast full build up including full range of Sikafloor® coating system smooth or broadcasted to match every customer's need.	High quality floor system with flexible time window.

SikaScreed®HardTop-70 isn't included in this selection chart but is used in the different build ups as patch and repair mortar in thicknesses from 10 - 200 mm. In special cases can also be used as main screed mortar with the same finishes and surface protections or coatings.

This selection chart is an overview of the main systems. After consultation with the local SikaScreed® specialist, additional systems can be developed and adapted on customer request.

Please check always latest Product and System Data Sheets and Method Statments for detailed instructions.

GLOBAL BUT LOCAL PARTNERSHIP



FOR MORE SIKA FLOORING INFORMATION:



WE ARE SIKA

Sika is a specialty chemicals company with a leading position in the development and production of systems and products for bonding, sealing, damping, reinforcing and protecting in the building sector and the motor vehicle industry. Sika's product lines feature concrete admixtures, mortars, sealants and adhesives, structural strengthening systems, industrial flooring as well as roofing and waterproofing systems.

Our most current General Sales Conditions shall apply. Please consult the most current local Product Data Sheet prior to any use.



SIKA SERVICES AG
Tueffenwies 16
CH-8048 Zurich
Switzerland

Contact
Phone +41 58 436 40 40
www.sika.com

BUILDING TRUST

